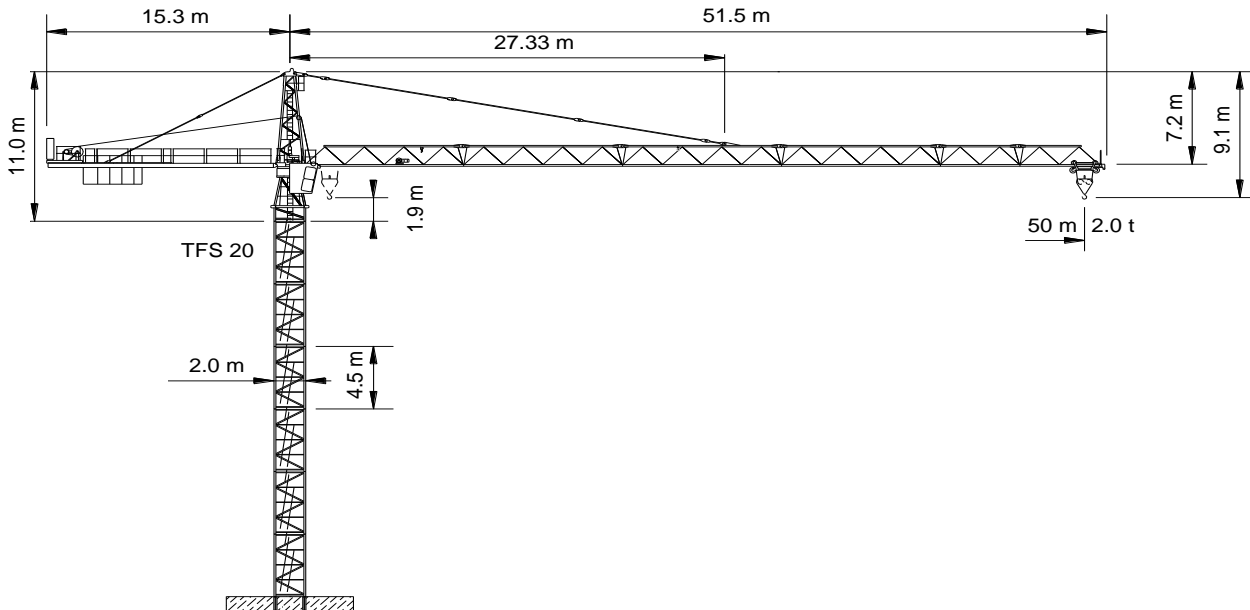


WOLFF WK 122 SL-2

Spitze 7 700 kg
 Ausleger 8 500 kg
 Gegenausleger 8 000 kg
 Autokran HK+ 14 m



Anschluss / câble d'alimentation: 4 x 35°
 Absicherung / fusible: 100 A
 Anlaufstrom / courant de pointe maxi: 234 A

Spezialauslegerlänge 55m

Ausladung / portée [m]		20	25	30	35	40	45	50	55		
Auslegerlänge [m] flèche [m]	55	2.6 - 12.5	4.70	3.60	2.86	2.34	1.95	1.64	1.40	1.20	Tragfähigkeit [t] force de levage [t]
	50	2.6 - 15.9	6.20	4.80	3.87	3.20	2.70	2.31	2.00		
	45	2.6 - 16.4	6.40	4.96	4.00	3.32	2.80	2.40			
	40	2.6 - 17.3	6.80	5.28	4.27	3.54	3.00				
	35	2.6 - 17.7	6.99	5.43	4.39	3.65					
	30	2.6 - 18.2	7.225	5.62	4.55						

Motor [kW] 45 m/min. 1.5/.. /53/.. /147	Motor [kW] 3.9 m/min. 20/40/80	Motor [kW] 2 x 4 r.p.m. 0.85 m ⁻¹
--------------------------------------------	-----------------------------------	-------------------------------------------------