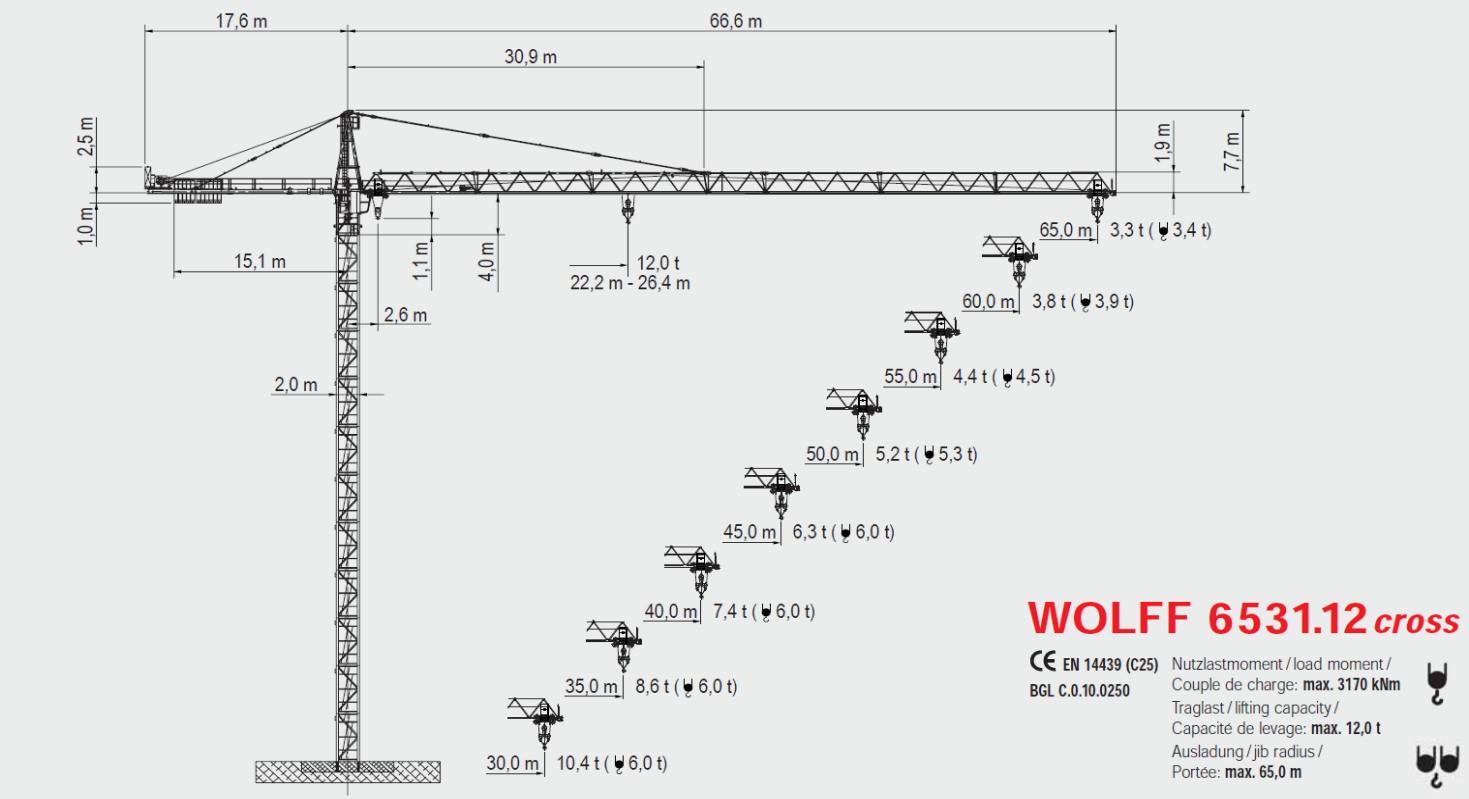


# WOLFF 6531.12 cross



Spitze 11.8 to  
 Ausleger 14 to Anschluss / câble d'alimentation: 4 x 70 °  
 Gegenausleger 10.2 to Absicherung / fusible: 125 A  
 Autokran HK+15 m Anlaufstrom / courant de pointe maxi: 227 A



## WOLFF 6531.12 cross

CE EN 14439 (C25) Nutzlastmoment / load moment /  
 BGL C.0.10.0250 Couple de charge: max. 3170 kNm  
 Traglast / lifting capacity /  
 Capacité de levage: max. 12.0 t  
 Ausladung / jib radius /  
 Portée: max. 65.0 m

WOLFF 6531.12cross (Hw 645 / 675 FU)

**Antriebe - WOLFF 6531.12cross - (Hw 645 FU)**  
**Mechanisms**  
**Mécanismes**

Motor (kW) motor Moteur	45	45	9.0	2 x 6.0	2 x 5.5
Geschwindigkeit speed Vitesse	0 - 1.0 t 0...140 m/min stufenlos/ stepless/ en continue 0 - 6.0 t 0...36 m/min	0 - 2.0 t 0...70 m/min stufenlos/ stepless/ en continue 0 - 12.0 t 0...18 m/min	0 - 3.0 t 0...100 m/min stufenlos/ stepless/ en continue 0 - 6.0 t 0...80 m/min 0 - 12.0 t 0...40 m/min	0.75 min <sup>-1</sup>	25.0 m/min
Hakenweg (m) hook path course du crochet	190	95			

**Traglasten (t) - WOLFF 6531.12 cross - (Hw 645 FU + Hw 675 FU)**  
**Load Data**  
**Charges**

Ausladung (m) / jib radius (m) / Portée (m)	25	30	35	40	45	50	55	60	65
65	2.6 - 41.2	6.0	6.0	6.0	5.4	4.8	4.2	3.8	3.4
60	2.6 - 42.3	6.0	6.0	6.0	5.6	4.9	4.4	3.9	
55	2.6 - 43.4	6.0	6.0	6.0	5.8	5.1	4.5		
50	2.6 - 45.1	6.0	6.0	6.0	6.0	5.3			
45	2.6 - 45.0	6.0	6.0	6.0	6.0	6.0			
40	2.6 - 40.0	6.0	6.0	6.0	6.0	6.0			
35	2.6 - 35.0	6.0	6.0	6.0	6.0	6.0			
30	2.6 - 30.0	6.0	6.0	6.0	6.0	6.0			

**Antriebe - WOLFF 6531.12 cross - (Hw 675 FU)**  
**Mechanisms**  
**Mécanismes**

Motor (kW) motor Moteur	75	75	9.0	2 x 6.0	2 x 5.5
Geschwindigkeit speed Vitesse	0 - 1.0 t 0...230 m/min stufenlos/ stepless/ en continue 0 - 6.0 t 0...36 m/min	0 - 2.0 t 0...115 m/min stufenlos/ stepless/ en continue 0 - 12.0 t 0...28 m/min	0 - 3.0 t 0...100 m/min stufenlos/ stepless/ en continue 0 - 6.0 t 0...80 m/min 0 - 12.0 t 0...40 m/min	0.75 min <sup>-1</sup>	25.0 m/min
Hakenweg (m) hook path course du crochet	460	230			

**Antriebe - WOLFF 6531.12 cross - (Hw 845 FU)**  
**Mechanisms**  
**Mécanismes**

Motor (kW) motor Moteur	45	45	7.5	2 x 6.0	2 x 5.5
Geschwindigkeit speed Vitesse	0 - 1.3 t 0...115 m/min stufenlos/ stepless/ en continue 0 - 8.3 t 0...25 m/min	0 - 3.5 t 0...58 m/min stufenlos/ stepless/ en continue 0 - 12.0 t 0...18 m/min	0 - 3.0 t 0...100 m/min stufenlos/ stepless/ en continue 0 - 6.3 t 0...65 m/min 0 - 12.0 t 0...40 m/min	0.8 min <sup>-1</sup>	25.0 m/min
Hakenweg (m) hook path course du crochet	190	95			

**Traglasten (t) - WOLFF 6531.12 cross - (Hw 845 FU)**  
**Load Data**  
**Charges**

Ausladung (m) / jib radius (m) / Portée (m)	25	30	35	40	45	50	55	60	65
65	2.6 - 30.8	8.3	8.3	7.2	6.1	5.3	4.7	4.1	3.7
60	2.6 - 31.6	8.3	8.3	7.4	6.3	5.5	4.8	4.3	3.8
55	2.6 - 32.4	8.3	8.3	7.6	6.5	5.7	5.0	4.4	
50	2.6 - 33.7	8.3	8.3	8.0	6.8	5.9	5.2		
45	2.6 - 35.5	8.3	8.3	8.3	7.2	6.3			
40	2.6 - 36.2	8.3	8.3	8.3	7.4	6.3			
35	2.6 - 35.0	8.3	8.3	8.3	8.3	7.4			
30	2.6 - 30.0	8.3	8.3	8.3	8.3	8.3			